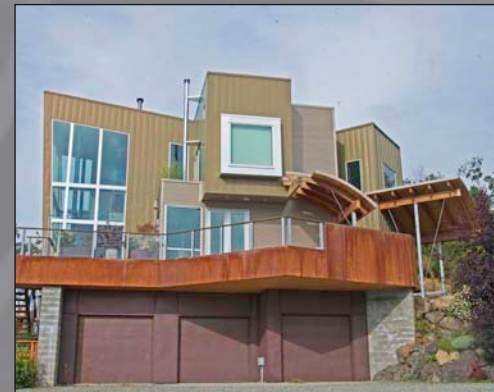
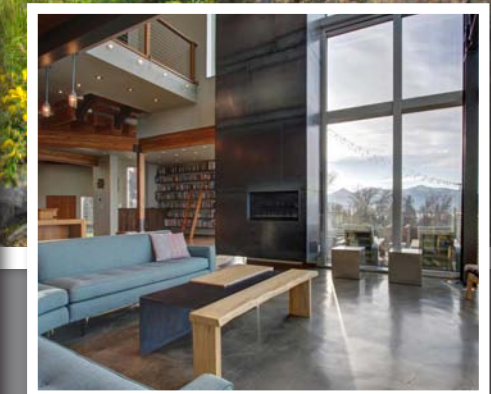
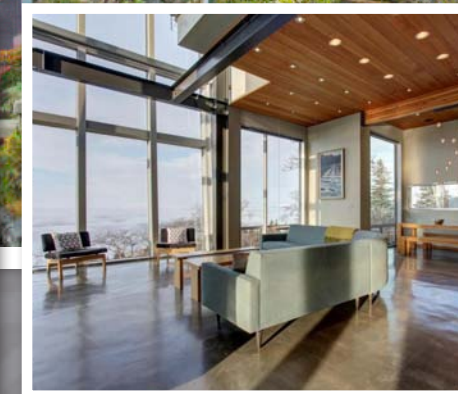


# Extraordinary Architectural Home



Over 1,700 square feet of Ipe decks offer fabulous vistas of sea and land. A spring-fed pond, and multiple water features with connecting tumbling water falls and ponds greet guests as a bridge crosses a stream to the front entry. The shallow pond is perfect for small kayaks and ice skating during winter months. A modern garden shed matches the home. The fire pit, personal use trails for hiking or cross country skiing on the property beckon during all seasons.

A 2nd lot of 49,457 sq ft. adjacent to Villages Scenic Parkway owned by the Seller can be purchased separately. Priced at \$135,000 this lot is offered at less than city assessment





# 19665 Villages Scenic Parkway

## About The Home

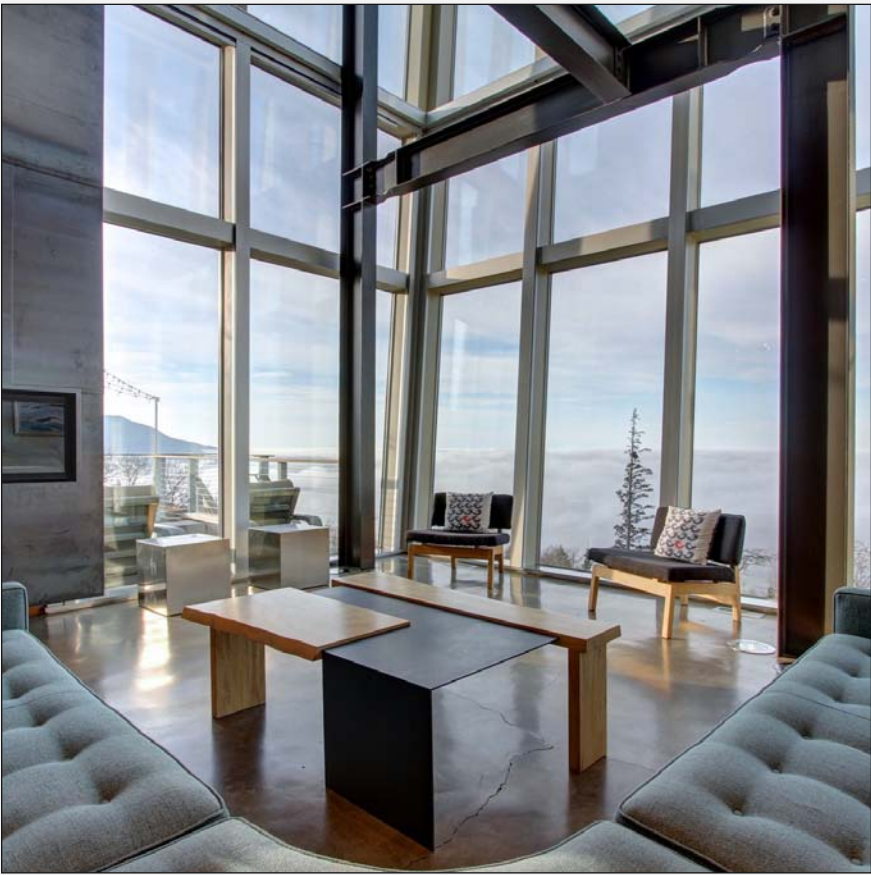
Extraordinary architectural home with unobstructed views of Cook Inlet, city lights and the Alaska & Kenai Ranges! Offering unique custom finishes, polished concrete floors, reclaimed woods, soaring two story ceiling w/dramatic south & west-facing angled window wall & in-floor radiant heat.

A truly gourmet kitchen w/butler's pantry, stainless Thermador appliances including two gas ranges, a 6+ burner cooktop and SubZero glass-door refrigerator allow for entertaining friends & family alike. The home boasts stunning custom lighting including the Droog light fixture featured in New York's' Museum of Modern Art.

3 Bedrooms+ flex space | 3.5 Bathrooms  
3 Car Garage

4,361+ SF Res  
3.44 Acre Lot

Schools: Rabbit Creek, Goldenview, South



A bedroom and bonus room downstairs can be utilized as a large bedroom or a separate rec room and 4th bedroom. Upstairs each bedroom has its own bath & built-in custom furniture. Recessed window coverings in stainless housing disappear to maintain the minimalist design.

Over-engineered for earthquake and wind the home boasts a steel "moment frame". Built with eco-conscious sensibility, details such as passive solar gain design, soy insulation and geothermal heat pump were utilized. Constructed using state of the art recycled metal, rubber roof, aluminum argon triple pane windows, and reclaimed woods from various sources including old barns, dismantled factories, train tunnels, and military bases. Multiple species of wood throughout the house include cherry, Douglas fir, walnut, bamboo and tropical hardwoods. This home was designed and fabricated for low maintenance and total enjoyment of the Alaskan lifestyle.



Text R586532 to 52187 for more photos and details